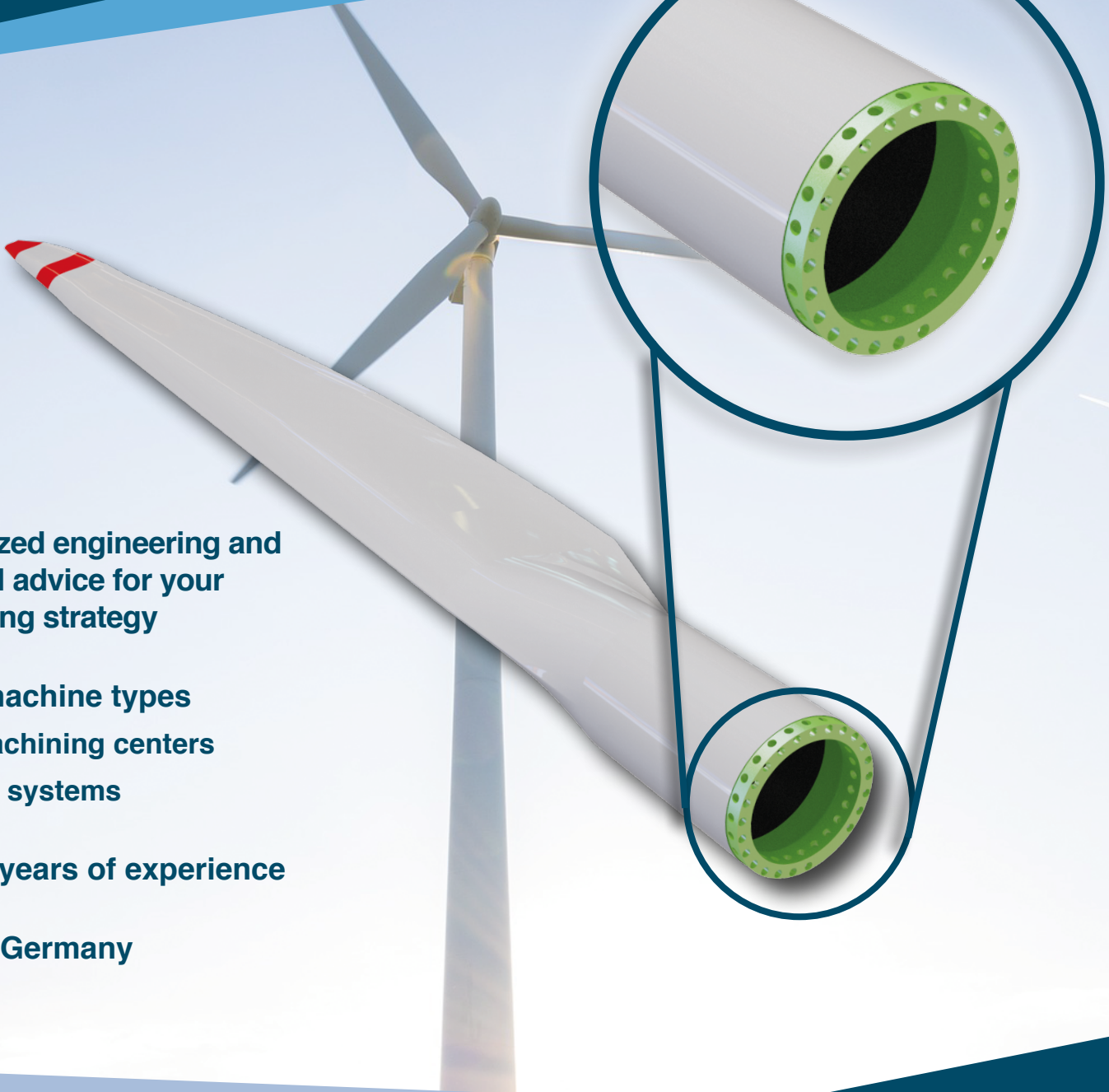


LACH DIAMANT

since 1922



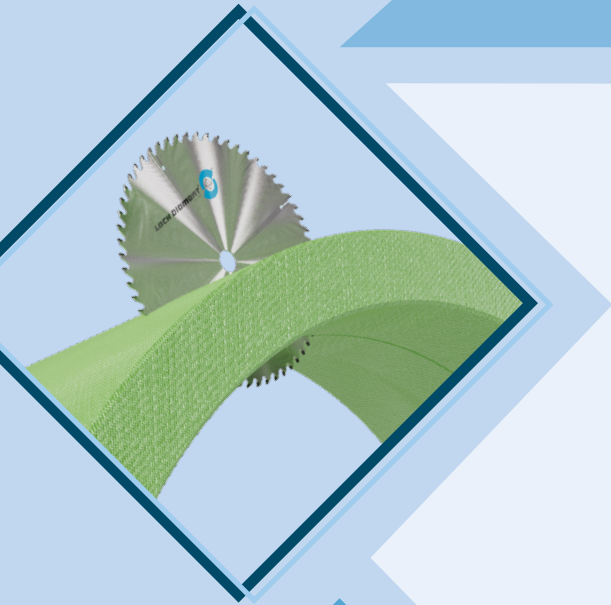
Rotorblades in Perfection



- ◆ Customized engineering and technical advice for your processing strategy
- ◆ For all machine types
 - CNC machining centers
 - Robotic systems
- ◆ Over 25 years of experience
- ◆ Made in Germany

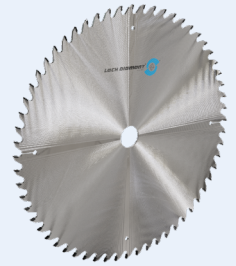
**Diamond tools for root end manufacturing:
cutting, drilling, milling**

Cutting solutions



PCD tipped cutting saws

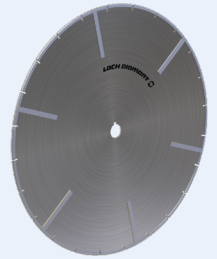
- ◆ High feed rates reduce machining times
- ◆ Long tool life
- ◆ Resharpenable multiple times/ retipping of PCD inserts



diameters available from Ø300–550mm

Diamond cutting discs electroplated bond

- ◆ Easy set-up
- ◆ Recoatable multiple times



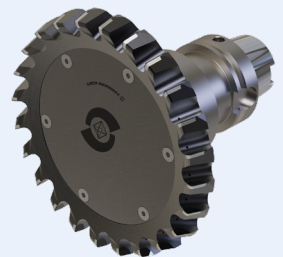
diameters available from Ø300–550mm

Face milling solutions



PCD monoblock face milling heads

- ◆ Monoblock milling heads to ensure high surface flatness with less delamination
- ◆ High feed rates reduce machining times
- ◆ Internal coolant channels (air) for longer tool life
- ◆ Resharpenable multiple times/ retipping of PCD inserts
- ◆ For adapters SK or HSK



diameters available from Ø80–220mm

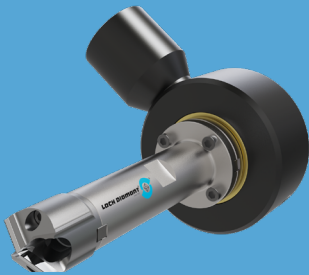
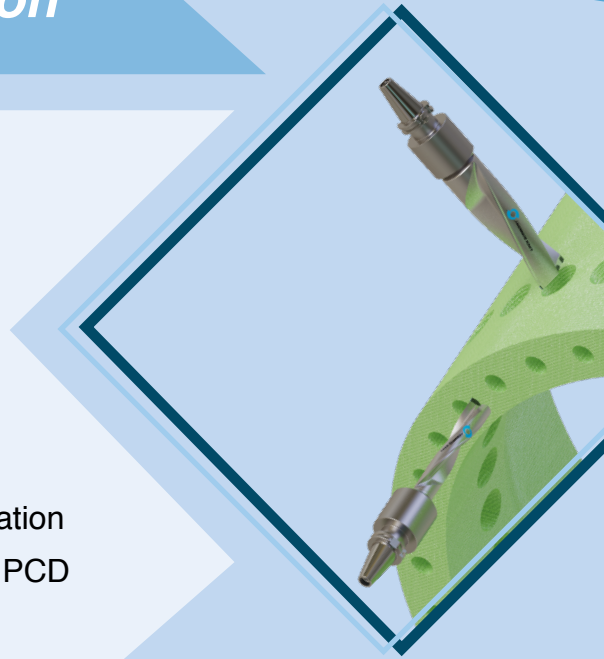
Drilling solutions for T-bolt connection



drilling diameters
from Ø20-100mm

PCD brazed solid drilling tools
recommended for CNC machines

- ◆ High stability and feed rates
- ◆ Internal coolant channels (air) for longer tool life
- ◆ Long lasting guidance characteristics
- ◆ Better drilling exit quality with less delamination
- ◆ Resharpenable multiple times/ retipping of PCD inserts
- ◆ Weldon shaft for adapters SK or HSK

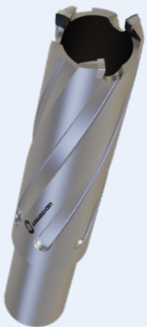


INNOVATION:
Internal exhaustion for a dust-free drilling operation

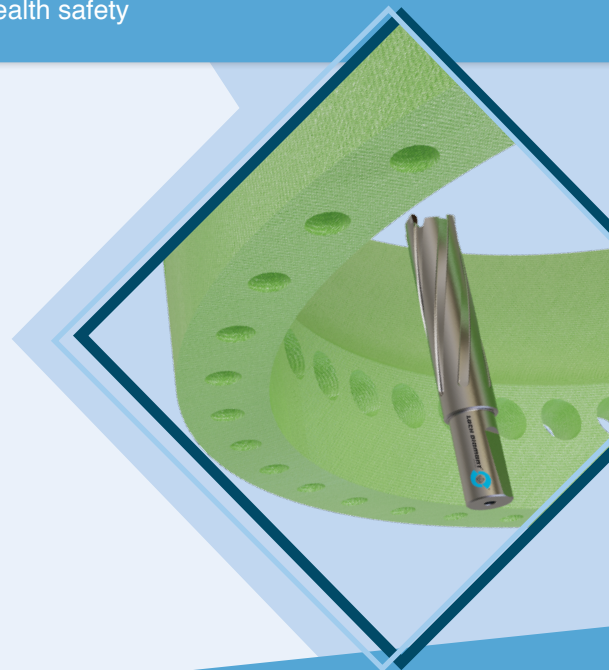
- ◆ Patent by LACH DIAMANT
- ◆ Free of dust and chips
- ◆ Longer tool life
- ◆ Pro environment and health safety

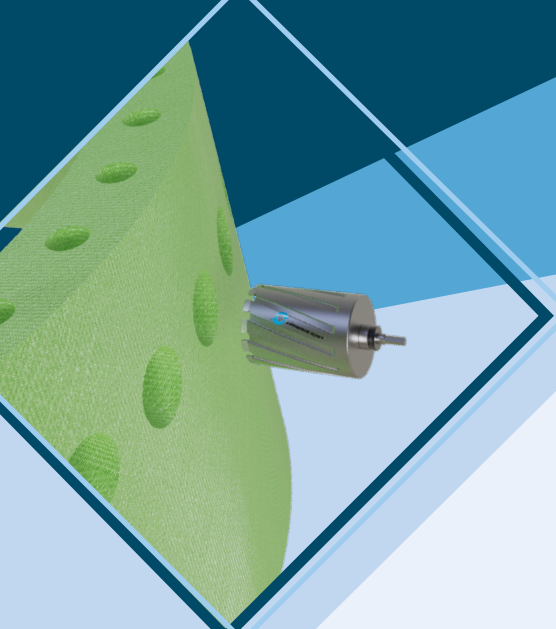
PCD tipped hollow drills
recommended for robotic systems

- ◆ Minimal cutting forces, less vibrations
- ◆ Less chip occurrence
- ◆ Resharpenable multiple times/ retipping of PCD inserts
- ◆ Weldon shaft for adapters SK or HSK



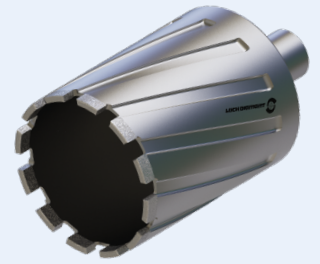
drilling diameters
from Ø30-150mm





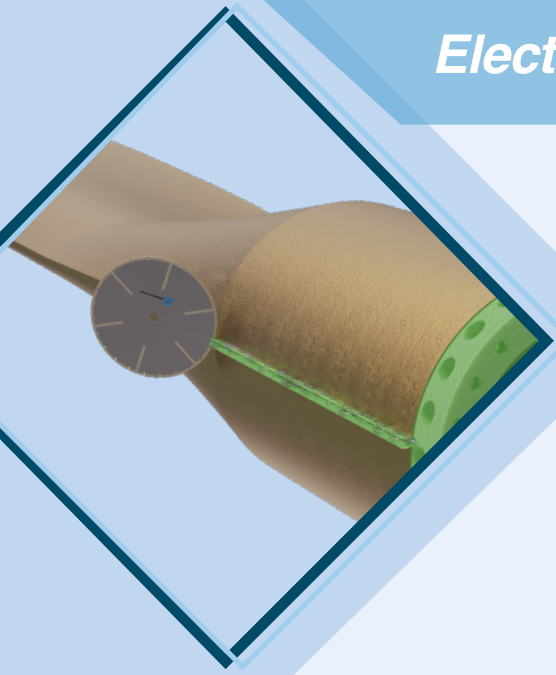
Electroplated hollow drills
recommended for robotic systems

- ◆ Minimal cutting forces, less vibrations
- ◆ Less chip occurrence
- ◆ Low investment costs



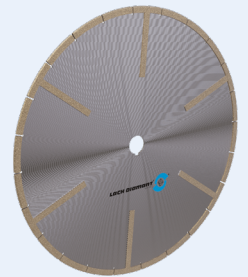
*diameters available
from Ø30-150mm*

Electroplated cutting discs for manual rework



Electroplated cutting discs

- ◆ For handling of manual machines
- ◆ Different grades and sizes to fit all applications



Headquarter Hanau/Frankfurt a.M.
Germany



Plant Lichtenau/Chemnitz Germany



LACH DIAMOND Inc.,
Grand Rapids, Michigan, USA

JAKOB LACH GmbH & Co. KG
Donaustr. 17 · 63452 Hanau · Germany
Ph. +49-61 81-103 0
Fax +49-61 81 - 103 860
www.lach-diamant.de
office@lach-diamant.de



**LACH
DIAMANT**

